



These course maps are for illustrative purposes only - NOT to be used for navigation

Starting Area Location: Grand Anse Bay

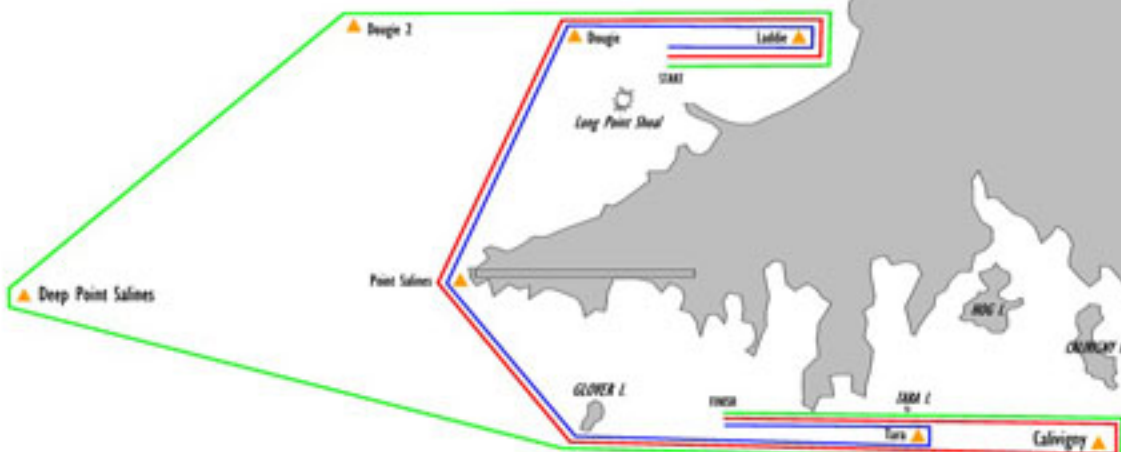
Grenada Sailing Association
Course A
Grand Anse to South Coast



Course A1 Blue
Start: Laddie to port:
Dougie to port:
Point Salines to port:
Glovers Island to port:
Tara to port: Finish.

Course A2 Red
Start: Laddie to port:
Duggie to port:
Point Saline to Port:
Glovers Island to port:
Calivigny to port:
Finish.

Course A3 Green
Start: Laddie to port:
Duggie 2 to port:
Deep Point Saline to Port:
Glovers Island to port:
Calivigny to port:
Finish.



N.B. Long Point Shoal & the Porpoises shall rank as an obstruction.

Starting Area Location: South of True Blue Bay & East of Glover Island

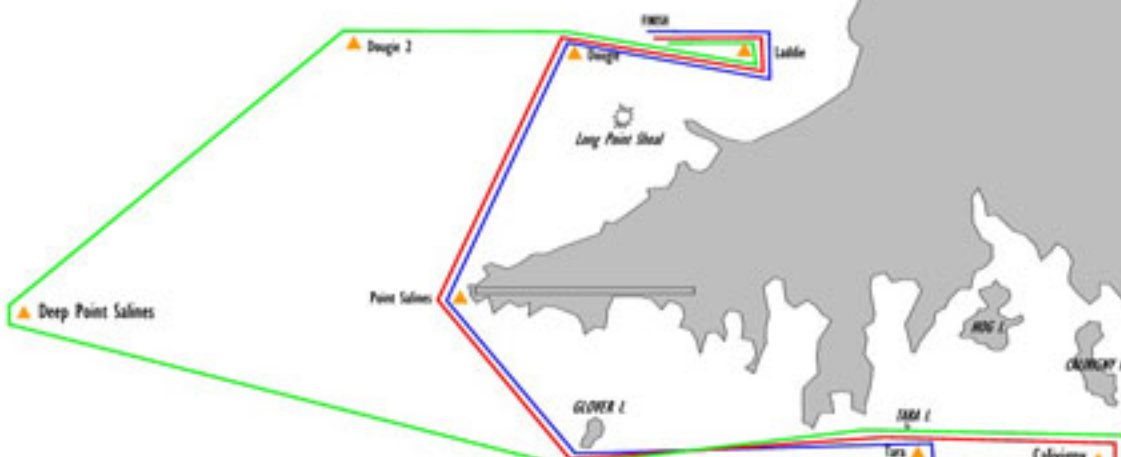
Grenada Sailing Association
Course B
South Coast to Grand Anse



Course B1 Blue
Start: Tara to Port:
Glovers Island to Stbd.:
Point Saline to Stbd.:
Dougie to Stbd.:
Laddie to Port:
Finish

Course B2 Red
Start:
Calivigny to Port:
Glovers Island to Stbd.:
Point Saline to Stbd.:
Dougie to Stbd.:
Laddie to Port:
Finish

Course B3 Green
Start:
Calivigny to Port:
Glovers Island to Stbd.:
Deep Point Saline to stbd.:
Dougie 2 to Stbd.:
Laddie to Port:
Finish



N.B. Long Point Shoal & the Porpoises shall rank as an obstruction.

Starting Area Location: Grand Anse Bay

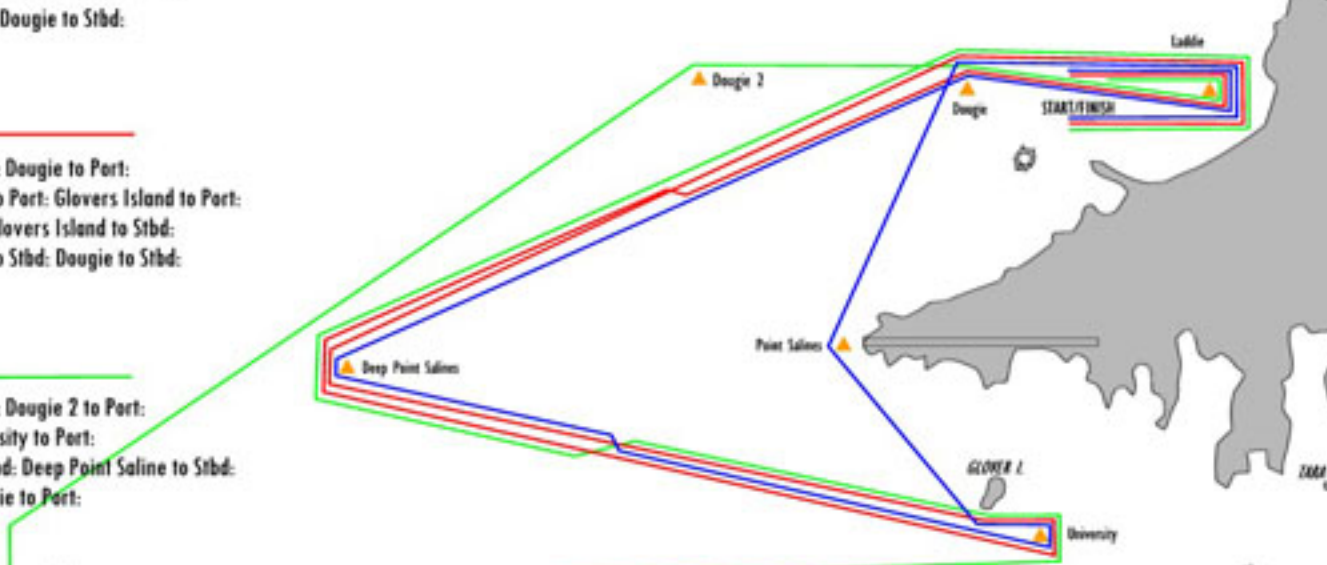
Grenada Sailing Association
Course C
Offshore



Course C1 Blue
Start: Laddie to Port: Dougie to Port:
Deep Point Salines to Port: Glovers Island to Port:
University to port: Glovers Island to Stbd.:
Point Saline to Stbd.: Dougie to Stbd.:
Laddie to Port:
Finish

Course C2 Red
Start: Laddie to Port: Dougie to Port:
Deep Point Salines to Port: Glovers Island to Port:
University to Port: Glovers Island to Stbd.:
Deep Point Salines to Stbd.: Dougie to Stbd.:
Laddie to Port:
Finish

Course C3 Green
Start: Laddie to Port: Dougie 2 to Port:
Hugo to Port: University to Port:
Glovers Island to Stbd.: Deep Point Saline to Stbd.:
Dougie to Stbd.: Laddie to Port:
Finish



0